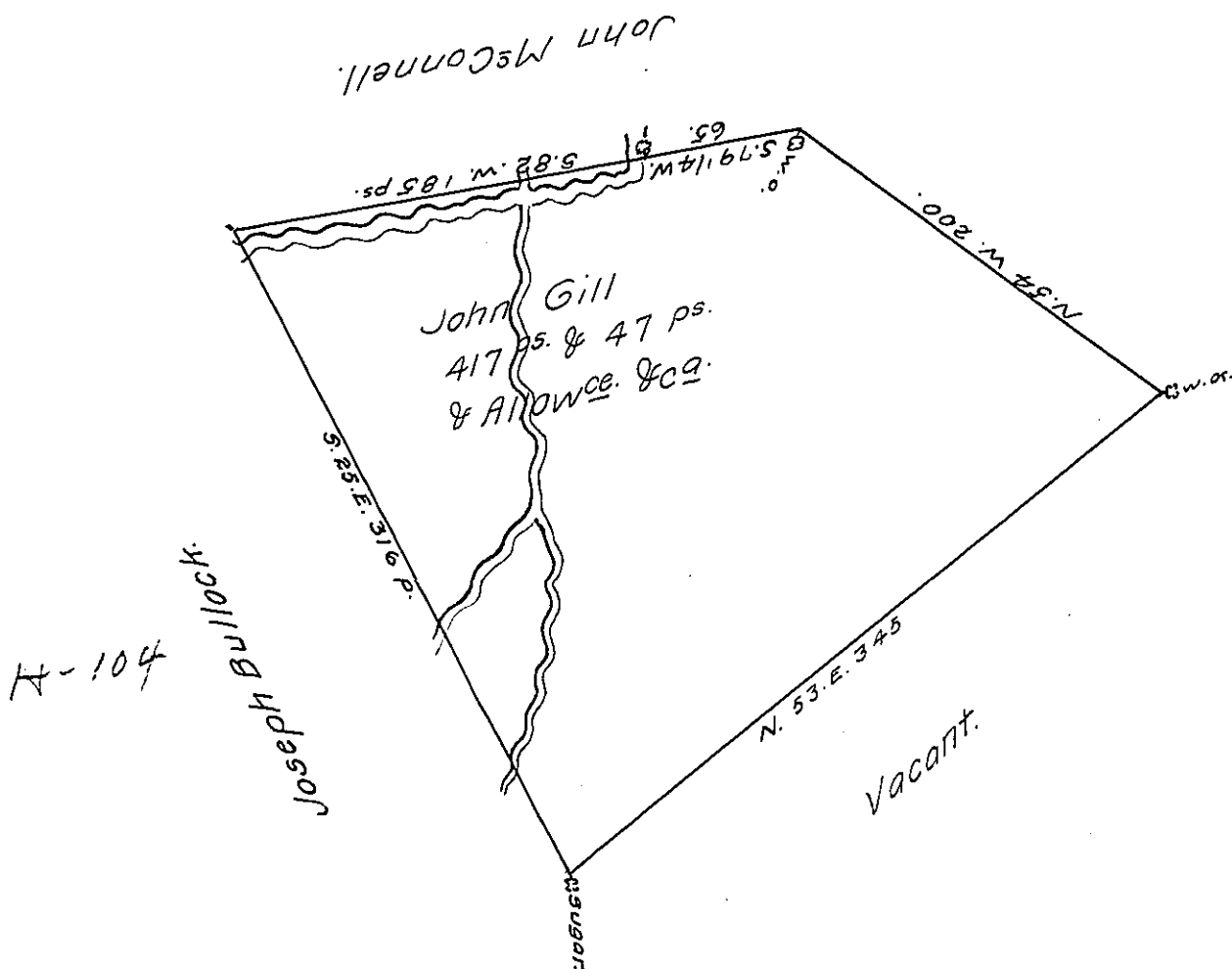


G-271



(now) Huntingdon County.

Draught of a tract of land situate on the waters of Clear Field Creek in the County of Bedford Containing Four hundred and seventeen Acres and the usual Allowance of six per Cent for Roads &c. surveyed for John Gill, November, 3^d, 1784. In pursuance of a warrant Dated 1st Day of July, 1784.

To John Lukens, Esq^r, S.G.

George Woods, D.S.

IN TESTIMONY that the above is a copy of the original remaining on file in the Department of Internal Affairs of Pennsylvania, made conformably to an Act of Assembly approved the 16th day of February, 1833, I have hereunto set my Hand and caused the Seal of said Department to be affixed at Harrisburg, this seventh day of March, 1911.

Nancy Howe
Secretary of Internal Affairs.